

Introduction to Science-Based Targets for Nature and SBTN



SCIENCE BASED TARGETS NETWORK
GLOBAL COMMONS ALLIANCE

基于科学的自然目标与
科学目标网络 (SBTN) 简介



What can your company do today to start aligning with science, to ensure it's doing its part in 2021 for an equitable, net zero, nature positive future?

2021年，您的公司可以做些什么来与科学接轨，并助力公平的、净零的、自然向上的未来？

Science-based targets lay out a net zero, nature positive pathway for business

科学碳目标为企业企划了一个实现碳净零、自然向好的途径



SCIENCE
BASED
TARGETS

DRIVING AMBITIOUS CORPORATE CLIMATE ACTION

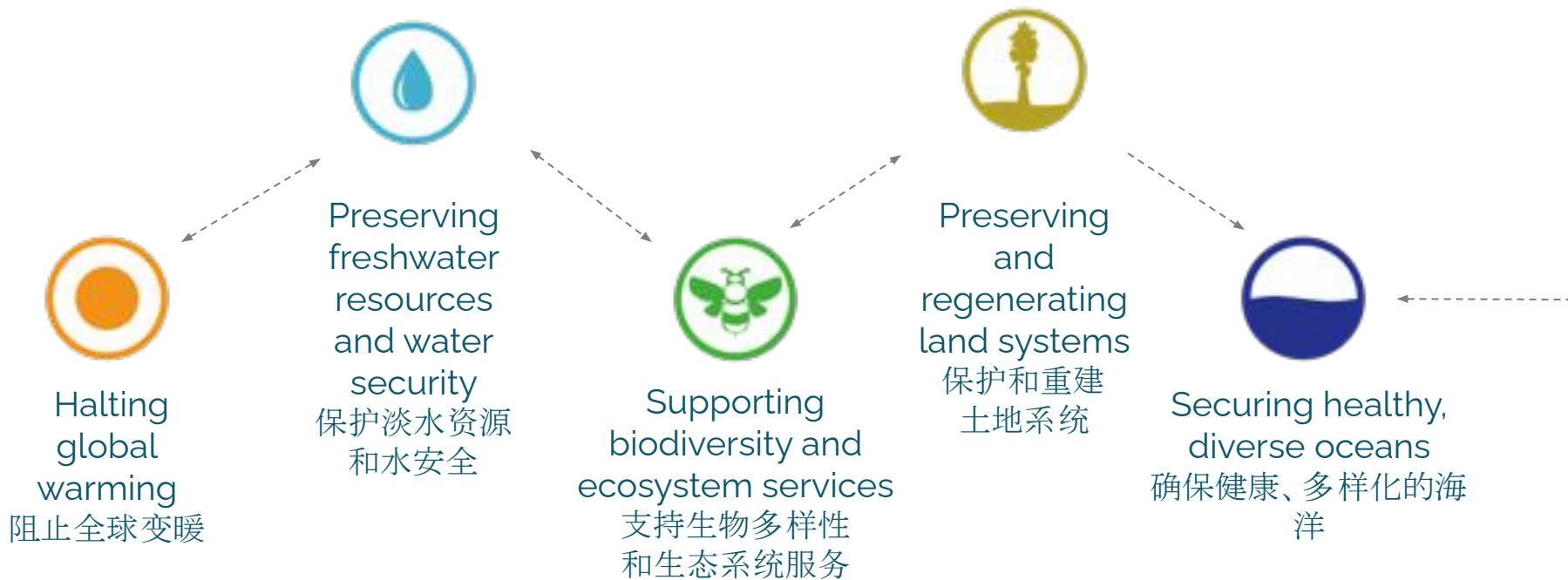


SCIENCE BASED TARGETS NETWORK
GLOBAL COMMONS ALLIANCE

Climate + Nature
气候 自然

**Together, we will discover how to integrate solutions that
will turn isolated issues into new opportunities**

我们将一起探索整合解决方案，将孤立的问题变成新的机会



SCIENCE BASED TARGETS NETWORK
GLOBAL COMMONS ALLIANCE

Global Commons Alliance 全球公共联盟

EARTH
COMMISSION

Earth Commission 地球委员会

Coalition of scientists aiming to identify a safe and just corridor for humanity.
旨在为人类确定一个安全和公正的前进路径的科学家联盟。

SBTN

Science Based Targets Network 科学目标网络

Aims to provide science-based targets for all global commons for all companies and cities in the world. 旨在为世界上所有公司和城市的所有全球公域提供基于科学的目标。

EARTH HQ

Earth HQ “地球总部” 媒体部门

Aims to establish powerful new media partnerships to reach millions of people.
旨在建立强大的新媒体伙伴关系，以触及数百万读者和网民。

SYSTEMS
CHANGE
LAB

Systems Change Lab 系统变更实验室

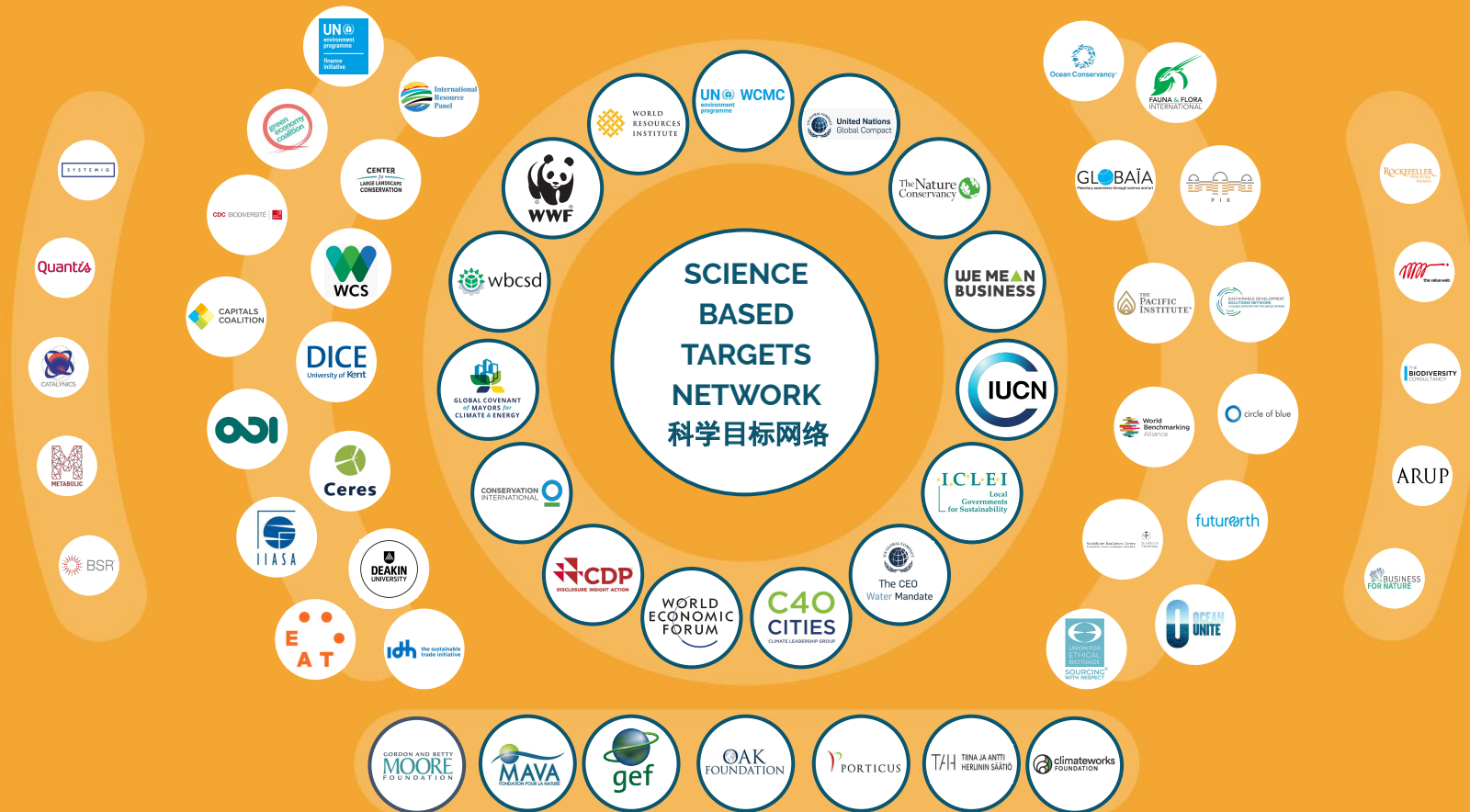
Aims to build the enabling systems to scale action rapidly across cities, companies and societies. 旨在建立有利系统，在城市、公司和社会中迅速扩大行动规模。



SCIENCE BASED TARGETS NETWORK
GLOBAL COMMONS ALLIANCE



Who we are 关于我们



Corporate Engagement Program members 企业参与计划成员

APRIL

Biodiv'Corp
WILD YOUR BUSINESS

DECATHLON

gsk

LafargeHolcim

MIGROS

Orkla

sky

Aptar

BL
evolution

DSM
BRIGHT SCIENCE. BRIGHTER LIVING.

HERSHEY

LE GROUPE LA POSTE

natura & co
AVON natura the story of us Athopis

Ørsted

SONAE
IMPROVING LIFE

Artistic Milliners
DENIM COMPANY OF THE FUTURE

BURBERRY
LONDON ENGLAND

ecopin
living planet solutions

HOUSE of BAUKJEN
BAUKJEN | Isabella Obler

L'ORÉAL

NatureMetrics
DNA-Based Monitoring

OWENS CORNING®

symrise

AVERY DENNISON

Carrefour

enel

icare
& consult

LVMH

Nestlé

PEPSICO

Tchibo

BAYER

alpro

Firmenich
for good, naturally

INSPIRED | Corporate Responsibility

macmillan
Publishers

Newmont™

PRé

Unilever

bel
for all the good

THE Coca-Cola
COMPANY

General Mills

KERING

manindra

Novacab
Smart Phases Inc.

pure STRATEGIES

valuing nature

BESTSELLER

Corbion

GNEISS

KIRIN

MARS

novozymes

SINAI

VATTENFALL

ENGIE

UTOPIES®

Schneider
Electric

VERTIGOLAB
ECONOMIE & ENVIRONNEMENT

yec
Yachiyo Engineering Co., Ltd.

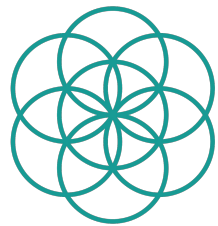
Energise

RISE | Research Institutes of Sweden

M
METABOLIC

Coalitions + financial institutions working with SBTN

与科学目标网络合作的联盟和金融机构



RSB

Roundtable on
Sustainable Biomaterials

www.rsb.org



INTERNATIONAL
PLATFORM FOR
INSETTING



Institute for
Sustainable
Innovation

Group of companies



Creating Material Change



THE
**FASHION
PACT**

Why science-based targets? 为什么参与基于科学的目标？

1. Credibility 公信力
2. Easily communicated contribution 沟通协调 评估贡献
3. Controlled trade-offs + increased co-benefits
协调权衡+增加共同利益
4. Consolidated and practical approach 综合的、实用的方法





基于科学的自然目标

初步指南

执行摘要

2020 年 9 月

What are science-based targets (SBTs)? 什么是基于科学的目标？

Science-Based

"Aligned with Earth's limits and societal sustainability goals"

The scope and ambition of the target at actor level is aligned with the scientific limits that define a safe space for humanity, and societal sustainability goals/targets that define a just future for nature and people.

Targets

"Measurable, actionable, and time-bound objectives"

Actors must be able to measure a baseline, take action, and track progress with a reasonable level of effort.

以科学为基础

"与地球的极限和社会可持续性目标相一致"

行动者层面的目标范围和雄心与界定人类安全空间的科学极限以及界定自然和人类公正未来的社会可持续性目标/指标相一致。

目标

"可衡量的、可操作的、有时限的目标"

行动者必须能够衡量基线，采取行动，并以合理足够的努力跟踪进展。



What is the science behind SBTs?

基于科学的目标背后的科学是什么？



- The **nine Planetary Boundaries** define the 'safe operating space' for humanity 九类“地球的边界”界定了人类的“安全操作空间”。
- Added social and economic development dimension of “just operating space” 新增“公正运行空间”的社会和经济层面
- Quantified limits to stay within 量化的限制
- If we cross a boundary, we risk **irreversible environmental damage and negative human impacts** 如果我们越过一个界限，我们会面临不可逆转的环境破坏和对人类的负面影响。
- So, what is the global goal for nature - what's the equivalent of 1.5°C? 那么对于自然界来说，1.5摄氏度的目标相当于什么？
- Global goals are still being established (e.g., UNCBD Post-2020 GBF) are to expected to be agreed in 2021) 全球目标仍在建立之中，预计将在2021年达成一致



How to set SBTs for nature?

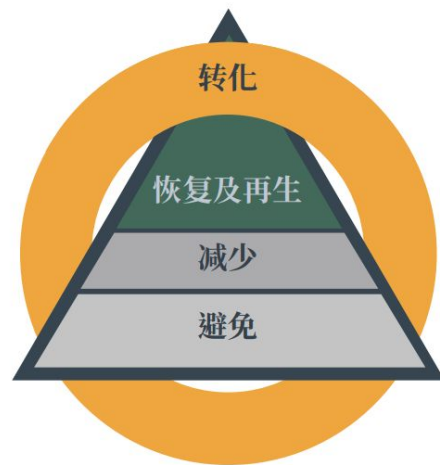
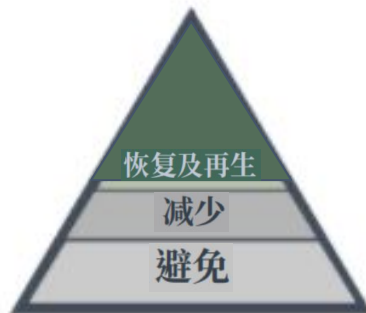
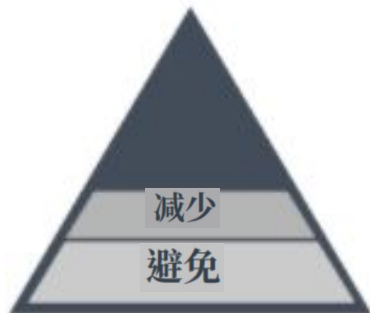
如何为自然界设定基于科学的目标？



Step 4 - Act: SBTN's Action Framework

第四步-行动：基于科学的自然目标行动框架

ART



SCIENCE BASED TARGETS NETWORK
GLOBAL COMMONS ALLIANCE

High level categories of SBTs for nature

对基于科学的自然目标（SBTs）的高级目标分类



Get started today: targets companies can set

从今天开始：公司可以设定的目标

Topic	Interim target	Ambition guidance	Indicator
Use Change (Land) 用途改变 (土地)	Reduce to X by 2030 activities causing deforestation / conversion in your supply chain 到2030年将贵公司供应链中导致森林砍伐/转化的活动减少到X。	Zero deforestation from 2020 / Zero conversion of natural habitats in value chain by 2030; following Accountability Framework Initiative 到2020年起零砍伐森林/到2030年, 价值链中自然生境的零转化 No net loss of non-forest natural habitats from 2020; following IFC PS 6	Deforestation / Conversion of natural ecosystems (ha) 砍伐森林/转换自然生态系统 (公顷)
Resource Exploitation (Freshwater) 资源开发 (淡水)	By 2030, reduce water use in high water impact parts of the value chain by x% 到2030年, 将价值链中对水影响大的部分的用水量减少x%。	Locally dependent; following Contextual Water Targets 因地制宜; 遵循背景水目标	water withdrawals (m ³) 用水减少量 (立方米)
Climate Change (Cross-Realm) 气候变化 (跨领域)	Reduce value chain GHG emissions by X% by 2030 到2030年将价值链的温室气体排放量减少X%。	>4.2%/year reductions for 1.5°C alignment; following Science-based Targets Initiative >4.2%/年的减排量与1.5°C一致; 遵循科学碳目标	GHG emissions (tons CO ₂ e) 温室气体排放 (吨CO ₂ e)
Ecosystems (Land) 生态系统 (土地)	Regenerate ecological integrity in supply chain by ensuring X% ecological focus areas per km ² for all sourced agricultural inputs 通过确保所有采购的农业投入品每平方公里有 X% 的生态重点区域, 使供应链中的生态完整性得到再生。	10% per km²; following European Commission definitions 每平方公里10%; 遵循欧盟委员会的定义	Fraction of agricultural land in ecological focus areas at 1 km ² scale (%) 每平方公里范围内生态重点地区的农业用地比例 (%)

An opportunity:
SBTN Corporate Engagement Program
科学目标网络（SBTN）企业参与计划

Companies that show their leadership by working with us to co-create science-based targets will also create new advantages for themselves

通过与我们合作，共同创建科学目标
展现公司领导力，创造新优势

Corporate Engagement Program 企业参与计划

- Program for companies, industry coalitions, and consultancies: current members
针对公司、行业联盟和咨询公司的计划: 现有成员
- Program duration: present to mid 2022 计划期限: 现在--2022年中期
- Aims of the Corporate Engagement Program 企业参与计划的目标:



Enable co-creation of tools and methods across broad spectrum of companies for cost-effective, user-friendly products that builds on what you are already doing. 促使广大公司共同创造工具和方法, 在已有基础上, 获得具有成本效益的、用户友好的产品。



Get companies started on what you can do today. 公司可以从当前业务开始改变。



Build momentum and business case for SBT for nature. 推动基于科学的自然目标, 创造创新商业案例。



Identify barriers to setting SBT for nature and what we might do to address now. 识别为自然界设定基于科学的目标的障碍, 以及我们现在可以做什么来解决这个问题。



Sign up 报名

**To find out more, sign up for the Corporate Engagement Program,
and see current members, please visit:**

要了解更多信息, 报名参加企业参与计划, 或查看现有成员, 请访问:

www.sciencebasedtargetsnetwork.org/join-the-sbtn-corporate-engagement-program



SCIENCE BASED TARGETS NETWORK
GLOBAL COMMONS ALLIANCE

Questions?

问答环节

Thank you for joining us!

感谢您的加入!

Visit us online:

我们的网址:

www.sciencebasedtargetsnetwork.org



SCIENCE BASED TARGETS NETWORK
GLOBAL COMMONS ALLIANCE

The Science Based Targets Network is part of the [Global Commons Alliance](#), a network of organizations, businesses and governments aiming to positively transform the world's economic systems and protect the global commons.

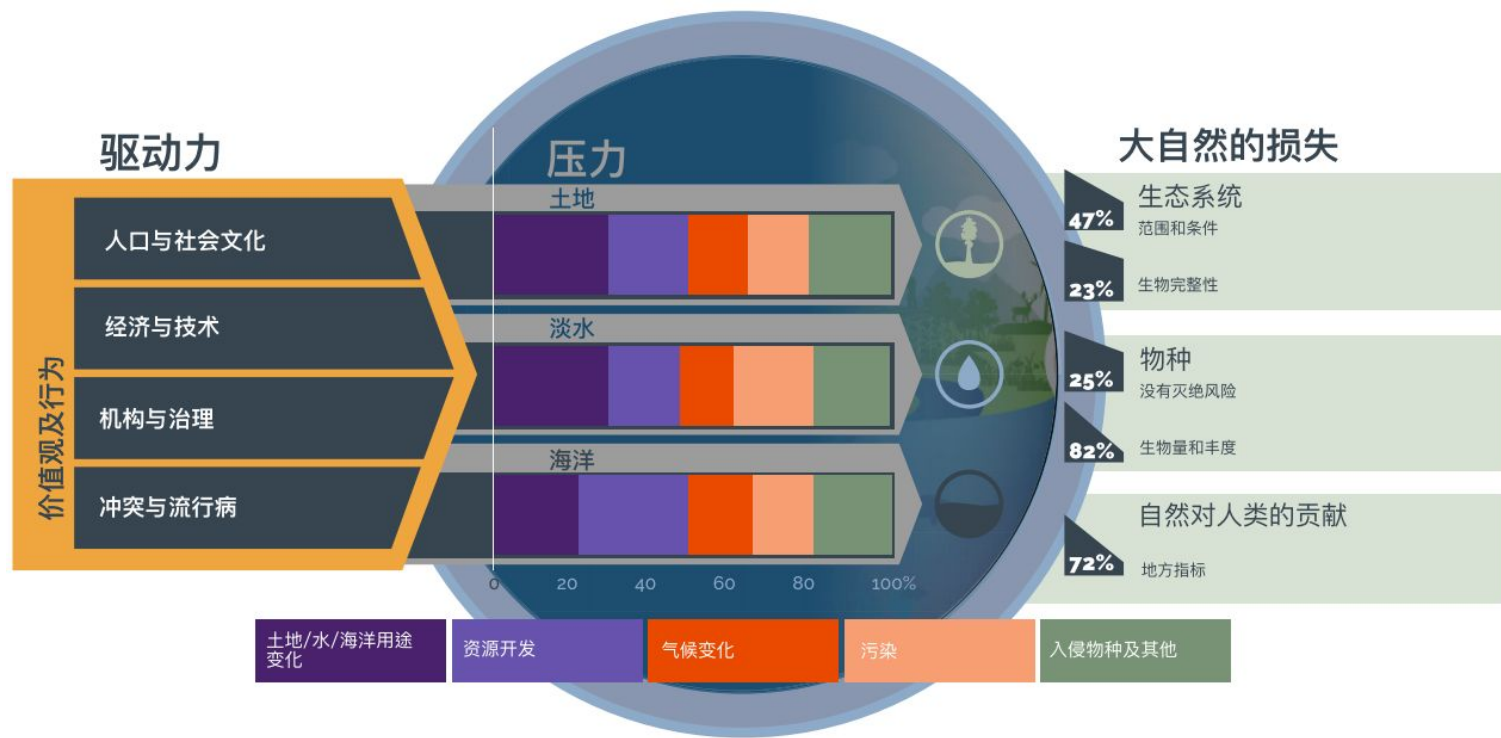
科学目标网络是[全球公共联盟](#)的一部分，该联盟是一个由社会组织、企业和政府组成的网络，旨在积极改造世界经济体系和保护全球公共资源。

Appendix

附录

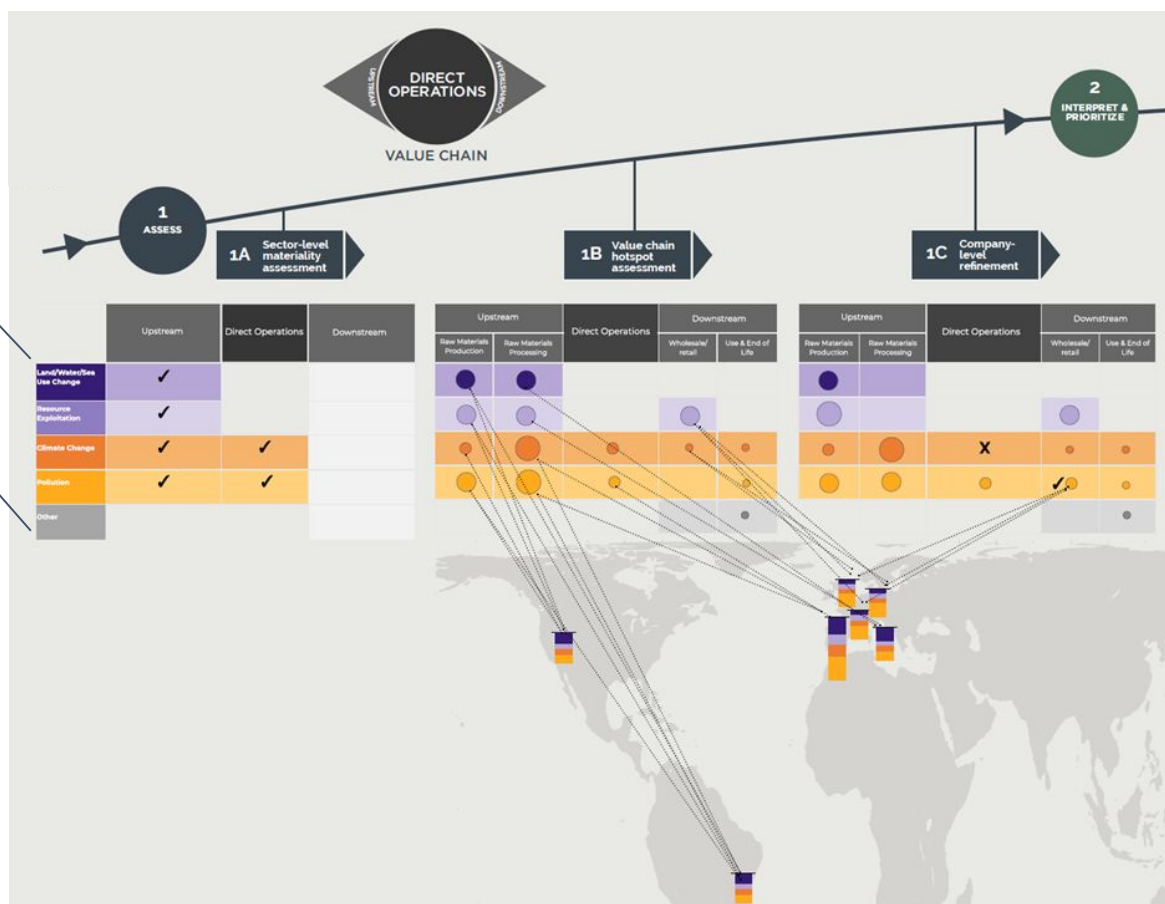
Conceptual framework behind the targets

目标背后的概念框架



Step one: value chain assessment

第一步：价值链评估



SCIENCE BASED TARGETS NETWORK
GLOBAL COMMONS ALLIANCE

Minimum requirements to participate*


参加的最低要求*

- 1. Getting started:** sign up on the SBTN website
开始:在SBTN网站上注册
- 2. Within one week:** submit signed terms of use & logo
一周内:提交签署的使用条款和企业标志 (logo)
- 3. Within one month:** a) pay nominal one-time fee & b) review our first product - *Science-Based Targets for Nature Initial Guidance for Business* - and provide feedback
一个月内:支付名义上的一次性费用;审查我们的第一个产品--《基于科学的自然目标 企业初步指南》, 并提供反馈
- 4. Within one year:** conduct step one of the Guidance (value chain mapping/materiality assessment), and provide feedback
一年内:进行《指南》的第一步(价值链规划/物质性评估), 并提供反馈意见
- 5. Annually:** promote the value of SBTs for nature within your organization and with other companies, and report on actively
每年:在你的组织内并与其他公司一起推广SBT对自然的价值 并积极报告

***You are not committing to setting a science-based target for nature by joining our Corporate Engagement Program.**



SCIENCE BASED TARGETS NETWORK
GLOBAL COMMONS ALLIANCE



“[Corporate] sustainability strategies should include...**science-based targets** as well as transition plans aligned with the EU's international commitments on the environment and climate change, in particular the Paris Agreement, the Convention on Biological Diversity and international agreements addressing deforestation”.

“[企业]可持续发展战略应包括.....基于科学的目标以及与欧盟在环境和气候变化方面的国际承诺相一致的过渡计划，特别是《巴黎协定》《生物多样性公约》和解决砍伐森林的国际协定”。

-EU Parliament, 17 December 2020

-欧盟议会, 2020年12月17日